

PRODUCT INFORMATION PACKET

Model No: 056T17W99020
Catalog No: N611A
2,1800,TEFC,56C,3/60/230/460
General Purpose



Regal and Marathon are trademarks of Regal Beloit Corporation or one of its affiliated companies.
©2018 Regal Beloit Corporation, All Rights Reserved. MC017097E





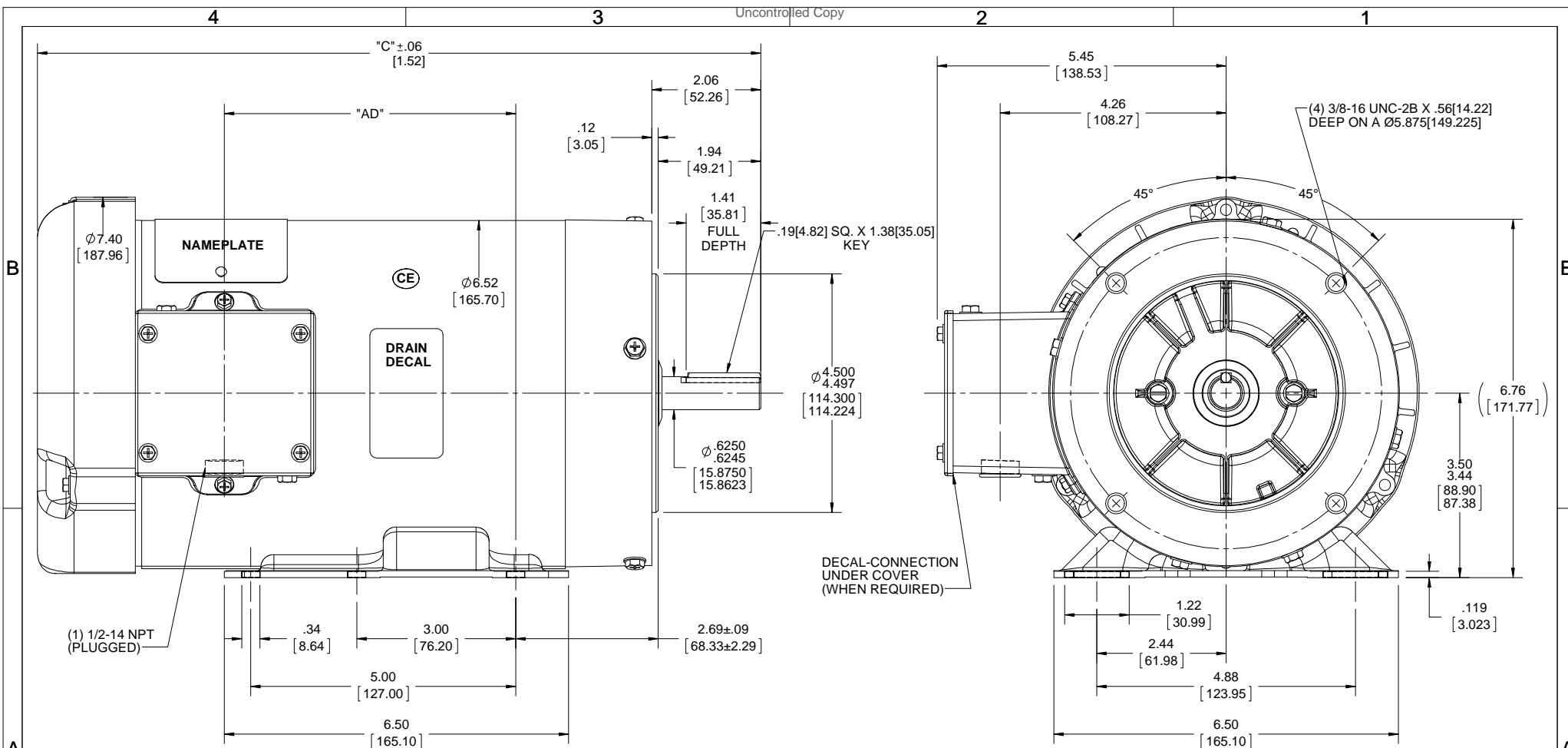
Nameplate Specifications

| | | | |
|----------------------------|------------------------------------|------------------------|-------------------|
| Output HP | 2 Hp | Output KW | 1.5 kW |
| Frequency | 60 Hz | Voltage | 230/460 V |
| Current | 6.0/3.0 A | Speed | 1725 rpm |
| Service Factor | 1.15 | Phase | 3 |
| Efficiency | 86.5 % | Duty | Continuous |
| Insulation Class | F | Design Code | B |
| KVA Code | L | Frame | 56C |
| Enclosure | Totally Enclosed Fan Cooled | Overload Protector | No |
| Ambient Temperature | 40 °C | Drive End Bearing Size | 6205 |
| Opp Drive End Bearing Size | 6203 | UL | Recognized |
| CSA | Y | CE | Y |
| IP Code | 55 | | |

Technical Specifications

| | | | |
|-----------------------|------------------------------------|-----------------------|------------------------|
| Electrical Type | Squirrel Cage Induction Run | Starting Method | Across The Line |
| Poles | 4 | Rotation | Reversible |
| Mounting | Rigid base | Motor Orientation | HORIZONTAL |
| Drive End Bearing | BALL | Opp Drive End Bearing | BALL |
| Frame Material | Rolled Steel | Shaft Type | T |
| Overall Length | 13.66 in | Frame Length | 8.00 in |
| Shaft Diameter | 0.625 in | Shaft Extension | 2.06 in |
| Assembly/Box Mounting | F1 ONLY | | |
| Outline Drawing | 029095-800 | Connection Diagram | 005010.01 |

This is an uncontrolled document once printed or downloaded and is subject to change without notice. Date Created: 10/30/2018



- WASHGUARD FEATURES**
- 1) SHAFT SEALS & V-RING
 - 2) DRAIN HOLES IN BOTH ENDBELLS & CONDUIT BOX
 - 3) GASKETS THROUGHOUT
 - 4) STAINLESS STEEL SHAFT, HARDWARE, & NAMEPLATE

MAXIMUM FACE RUNOUT .004 T.I.R.
 MAXIMUM PILOT ECCENTRICITY .004 T.I.R.
 PERMISSIBLE SHAFT RUNOUT .002 T.I.R.

| DASH NO. | "C" | "AD" |
|----------|---------------|--------------|
| 800 | 13.66[346.90] | 5.50[139.70] |

| | | | |
|---|-------------|------|---|
| DRAWING REVISION A | REVISION BY | DATE | TOLERANCES UNLESS OTHERWISE SPECIFIED: DEC. INCH mm ANGLE ±0.5° -X -0.1 [-2.5] .XX ±0.03 [+0.76] .XXX ±0.005 [+0.127] .XXXX ±0.0005 [+0.0127] REMOVE BURRS & BREAK SHARP EDGES: .003/.015 [.076/.381] X 45° CORNER FILLETS: R.02 [.51] MACHINED SURFACES: 125/3.2 INCH mm |
| ECO-0148826 | APPROVED BY | DATE | |
| ECO DESCRIPTION OUTLINE CONVERSION PROJECT <small>COPYRIGHT REGAL BELOIT AMERICA, INC. ALL RIGHTS RESERVED. PROPRIETARY AND CONFIDENTIAL INFORMATION - THIS DOCUMENT IS THE PROPERTY OF REGAL BELOIT AMERICA, INC. (OWNER) AND CONTAINS OWNERS PROPRIETARY INFORMATION. ANY PERSON, CORPORATION OR OTHER FIRM RECEIVING IT IS DEEMED, BY RECEIVING IT, TO AGREE THAT IT, AND/OR ANY PART OF IT, SHALL NOT BE DISCLOSED TO ANY PERSON, CORPORATION OR OTHER ENTITY, DUPLICATED, AND/OR USED, EXCEPT AS EXPRESSLY APPROVED IN WRITING IN ADVANCE BY OWNER. THIS DOCUMENT SHALL BE RETURNED TO OWNER UPON REQUEST. IT MAY BE SUBJECT TO CERTAIN RESTRICTIONS UNDER APPLICABLE EXPORT CONTROL LAWS AND REGULATIONS.</small> | | | THIRD ANGLE PROJECTION |

| | | |
|-----------------------|--------------------------|--|
| DRAWN BY A. KEETHA | DATE 05/09/2018 | Regal Beloit America, Inc. |
| APPROVED BY PK | DATE 07/16/2018 | |
| REFERENCE 028839 | MATERIAL | DESCRIPTION OUTLINE 56HC FRAME TEFC RIGID "C" |
| SIZE B | DRAWING NUMBER 029095 | PROCESS/FINISH |
| SHEET 1 OF 1 | | |

005010-01

VIEW FROM OUTSIDE OF MOTOR AT SWITCH END.



| VOLTAGE | L1 | L2 | L3 | JOIN & INSULATE |
|---------|-------|-------|-------|-------------------------------|
| HIGH | T1 | T2 | T3 | (T4,T7) (T5,T8) (T6,T9) |
| LOW | T1,T7 | T2,T8 | T3,T9 | T4,T5,T6 |

| | | | | | | | | | | |
|--|-----------------------|--------------|-----|--------------------------------|----------|---|-----------|--------------------|-------------|------|
| | | | | TOLERANCES UNLESS SPECIFIED | | REGAL ™ Regal Beloit America, Inc. | | DRAWN RDW 04/12/02 | | |
| | | | | DEC. | INCHES | | | CHK | | |
| | | | | .X | ±.1 | TITLE EXTERNAL WIRING DIAGRAM 3 PHASE W/O PROTECTOR | | APPD | | |
| | | | | .XX | ±.01 | | | SCALE 1=1 | | |
| | | | | .XXX | ±.005 | | | REF FIG.2-51 | | |
| A | UPDATED TO REGAL LOGO | SAJ 06/26/15 | AJY | .XXXX | ±.0005 | MAT'L DECAL - 004014 | | FMF | | |
| NO. | REVISION | BY & DATE | CHK | ANG | ±1/2" | FINISH | | PREV | | |
| THIS DRAWING IN DESIGN AND DETAIL IS OUR PROPERTY AND MUST NOT BE USED EXCEPT IN CONNECTION WITH OUR WORK ALL RIGHTS OF DESIGN AND INVENTION ARE RESERVED THIS IS AN ELECTRONICALLY GENERATED DOCUMENT - DO NOT SCALE THIS PRINT | | | | RFP | 04/12/02 | CAD FILE 00501001 | | SIZE | DRAWING NO. | REV. |
| | | | | DIST | BRF-NLV | A | 005010-01 | A | | |



P.O. BOX 8003
WAUSAU, WI 54401-8003
PH. 715-675-3311

DATA VOLTS: 460

CERTIFICATION DATA SHEET

CUSTOMER P.O. #:
 ORDER #: 00501001
 REFERENCE MODEL #: 56T17W99020
 CONN. DIAGRAM: 028839-800
 CAT #: N611A
 OUTLINE: T634340
 CUSTOMER PART #:
 WINDING: FR 3
 MOUNTING: F1 ONLY
 SPEED:
 TYPICAL MOTOR PERFORMANCE DATA

| HP | KW | SYNC RPM | FL RPM | FRAME | ENCLOSURE | TYPE | KVA CODE | DESIGN |
|----|-----|----------|--------|-------|-----------|------|----------|--------|
| 2 | 1.5 | 1800 | 1751 | 56C | TEFC | TEFR | L | B |

| PH | HZ | VOLTS | AMPS | START TYPE | DUTY | INSL | S.F. | AMB | ELEV. |
|----|----------|---------|------------|-----------------|------------|------|---------|-----------------|-------|
| 3 | 60 | 230/460 | 6/3 | ACROSS-THE LINE | CONT | F | 1.15 | 40 | 3300 |
| | F.L. EFF | 86.5 | 3/4 LD EFF | 85.6 | 1/2 LD EFF | 83.4 | GTD EFF | ELECT. TYPE | |
| | F.L. PF | 75.6 | 3/4 LD PF | 64.0 | 1/2 LD PF | 51.9 | 84.0 | SQ CAGE IND RUN | |

| F.L. TORQUE | LR AMPS @ 460 V | L.R. TORQUE | B.D. TORQUE | F.L. RISE (°C) |
|-------------|-----------------|-------------------------|---------------------------|-----------------|
| 6.0 LB-FT | 26.5 | 18.8 LB-FT | 24.6 LB-FT | 410% |
| @ 3 FT. | POWER | ROTOR WK ² | MAX. LOAD WK ² | SAFE STALL TIME |
| 65 DBA | 74 DBA | 0.16 LB-FT ² | 0 LB-FT ² | 10 SEC. |
| | | | | START/SHOUR |
| | | | | 3 |
| | | | | MOTOR WGT |
| | | | | 0 LB. |

*** SUPPLEMENTAL INFORMATION ***

| DE BRACKET TYPE | ODE BRACKET TYPE | MOUNT TYPE | MOTOR ORIENTATION | SEVERE DUTY | HAZARDOUS LOCATION | DRIP COVER | SCREENS | PAINT |
|-----------------|------------------|------------|-------------------|-------------|--------------------|------------|---------|--------------------|
| C-FACE | STANDARD | RIGID | HORIZONTAL | NO | NONE | NO | NONE | HTE - LEESSON(EPO) |

| BEARINGS | GREASE | SHAFT TYPE | SPECIAL DE | SPECIAL ODE | SHAFT MATERIAL | FRAME MATERIAL |
|--------------|------------|------------|------------|-------------|-----------------------|----------------|
| DE BALL 6205 | POLYREX EM | T | NONE | NONE | 303 STAINLESS (C-501) | ROLLED STEEL |

| THERMOSTATS | PROTECTORS | WDG RTD's | BRG RTD's | THERMISTORS | CONTROL | SPACE HEATERS |
|-------------|------------|-----------|-----------|-------------|---------|---------------|
| NONE | NOT | NONE | NONE | NONE | FALSE | NA |

| R1 (ohms/ph) | R2 (ohms/ph) | X1 (ohms/ph) | X2 (ohms/ph) | Xm (ohms/ph) | VIBRATION (in/sec) | FLOAT |
|--------------|--------------|--------------|--------------|--------------|--------------------|-------|
| 0 | 0 | 0 | 0 | 0 | 0.150 | ODE |

| | | | |
|-----|---------------------------|-----------------------|--|
| * N | | INVERTER TORQUE: NONE | |
| O | INV. HP SPEED RANGE: NONE | | |
| T | ENCODER: NONE | | |
| E | BRAKE: NONE | | |
| S | FT-LB: NA | | |
| | VOLTAGE: NONE | | |
| | HZ: NONE | | |

PREPARED BY: FAREEDA DUDEKULA
 DATE: 9/17/2018
 FORM: 3531 REV 4 2/27/06
 UL: V/INS, CONST UL REC

Data Sheet

56117W99020



Submital Data @ 460 V

Date: 9/17/2018

Customer:
 Attention:
 Submitted by: FAREEDA DUDEKULA

Motor Load Data

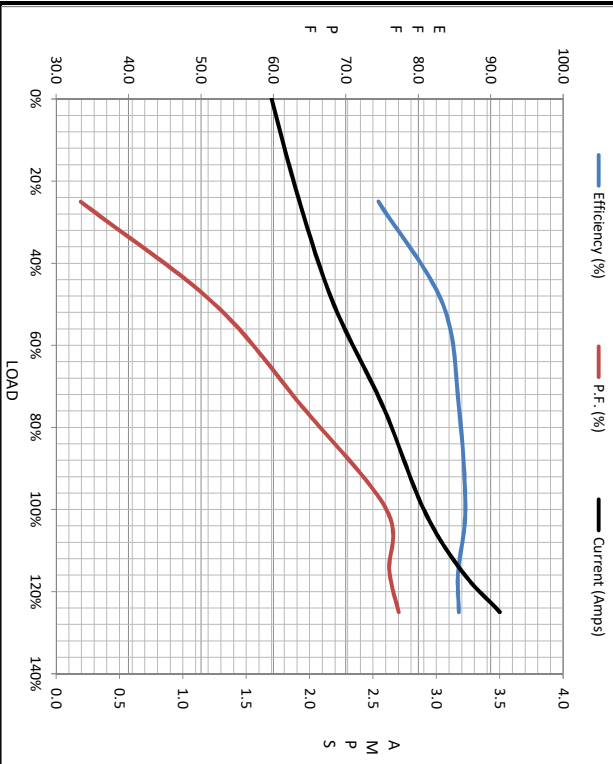
| Load | 0% | 25% | 50% | 75% | 100% | 115% | 125% | LR |
|----------------|------|------|------|------|------|-------|------|------|
| Current (Amps) | 1.70 | 1.92 | 2.19 | 2.58 | 2.90 | 3.2 | 3.5 | 26.5 |
| Torque (ft-lb) | 0.00 | 1.50 | 3.0 | 4.5 | 6.0 | 6.5 | 7.5 | 18.8 |
| RPM | 1800 | 1787 | 1774 | 1763 | 1751 | 1,730 | 1732 | 0 |
| Efficiency (%) | | 74.5 | 83.4 | 85.6 | 86.5 | 85.5 | 85.6 | |
| P.F. (%) | 7.1 | 33.4 | 51.9 | 64.0 | 75.6 | 76.0 | 77.3 | 42.0 |

Motor Speed Data

| | LR | Pull-Up | BD | Rated | Idle |
|----------------|------|---------|------|-------|------|
| Speed (RPM) | 0 | 775 | 1085 | 1751 | 1800 |
| Current (Amps) | 26.5 | 24.4 | 14.2 | 2.90 | 1.70 |
| Torque (ft-lb) | 18.8 | 15.0 | 24.6 | 6.0 | 0.00 |

Information Block

| | | | | |
|-----------------------------|-------------------------|--------|--------|--------|
| HP | 2.0 | | | |
| Sync. RPM | 1800 | | | |
| Frame | 140182TFC080 | | | |
| Enclosure | TEFC | | | |
| Construction | TFR | | | |
| Voltage | 230/460 V | | | |
| Frequency | 60 Hz | | | |
| Design | A | | | |
| LR Code letter | L | | | |
| Service Factor | 1.15 | | | |
| Temp Rise @ FL | 53 °C | | | |
| Duty | CONT | | | |
| Ambient | 40 °C | | | |
| Elevation | 1,000 feet | | | |
| Rotor/Shaft wk ² | 0.16 Lb-Ft ² | | | |
| Ret Wdg | T634340 FR | | | |
| Sound Pressure @ 1M | 65 DBA | | | |
| VFD Rating | NONE | | | |
| Outline Dwg | 028839-800 | | | |
| Conn. Diag | 005010.01 | | | |
| Additional Specifications: | | | | |
| 0 | | | | |
| 0 | | | | |
| R1 | R2 | X1 | X2 | Xm |
| 0.0000 | 0.0000 | 0.0000 | 0.0000 | 0.0000 |



Speed - Torque Curve

